



CITGO® CompressorGard® PS 68

OVERVIEW



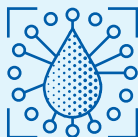
- A premium synthetic-blend compressor lubricant formulated with ultra-high purity hydrotreated base stocks and a proprietary synthetic component to aid in controlling sludge and deposit formation in compressor applications.
- Designed specifically for use in compressor applications, but can be used in multi-purpose applications.

FEATURES & BENEFITS



- Resists fluid breakdown caused by high operating temperatures.
- Improves condensate separator efficiency due to excellent demulsibility.
- Reduces fluid carryover and make-up oil costs due to low-volatility, ultra-high purity hydrotreated mineral oils, and synthetic base stocks.
- Reduces and controls deposits with high-performance, ashless additives.
- Improves equipment reliability by eliminating harmful varnish, sludge, and carbon deposits on rotors and separators.

APPLICATIONS



- Recommended for rotary vane, rotary screw, and centrifugal compressors.
- Suitable for hydraulic applications where anti-wear hydraulic oils are called for.
- Suitable for bearing applications.

PROPERTIES**Typical Properties for CITGO CompressorGard PS 68:**

ISO Viscosity Grade	68
Material Code	632482001
Specific Gravity ASTM D1298 60/60°F	0.884
Density, lb/gal	7.37
Viscosity ASTM D445	
cSt at 40°C	65.18
cSt at 100°C	8.38
Viscosity Index, ASTM D2270	97
Flash Point, ASTM D92, °C (°F)	260 (500)
Pour Point ASTM D97, °C (°F)	-36 (-33)
Color, ASTM D1500	0.5
Water Separation, ASTM D1401, 130°F (54°C)	40/40/0 (5)
Four Ball Wear, ASTM D4172, mm at 40 kg.	0.48
Copper Strip Corrosion, ASTM D130	1A
Rust Protection, ASTM D665	
DI Water, Proc. A	Pass
Sea Water, Proc. B	Pass
Foam, ASTM D892, Sequence I, II, III	Pass

CITGO and CompressorGard are registered trademarks of CITGO Petroleum Corporation. All other registered trademarks or trademarks are the property of their respective owners. Values shown are typical values only and do not constitute a specification. The information contained herein is subject to change without notice.